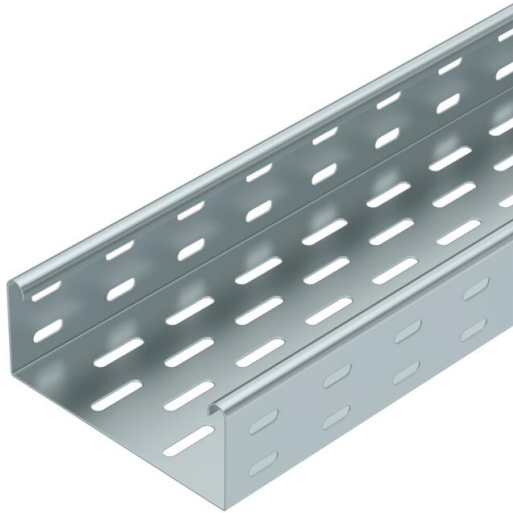


Technical data sheet

Cable tray MKS 60 FS

Item number: 6055141



MKS 60 = medium-duty cable tray system with a side height of 60 mm. Tested for installation above suspended fire protection ceilings (tray widths 100-400 mm, fire load 30 minutes, mounting work and parameters according to fire protection reports).
Magnetic shield insulation without cover 20 dB, with cover 50 dB.



- St** Steel
- FS** Strip galvanized

Master data

| | |
|------------------------------------|--------------------------|
| Item number | 6055141 |
| Type | MKS 615 FS |
| Description 1 | Cable tray MKS |
| Description 2 | perforated |
| Manufacturer | OBO |
| Dimension | 60x150x3000 |
| Colour | zinc |
| Material | Steel |
| Surface | Strip galvanized |
| Surface standard | DIN EN 10346 |
| Smallest sales unit | 3 |
| Unit of quantity | Metre |
| Weight | 214 kg |
| Weight unit | kg/100 m |
| CO2 Footprint (GWP) Cradle-to-Gate | 5,3712 kg CO2e / 1 Meter |

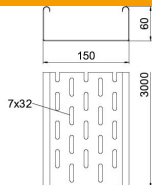
Technical data sheet

Cable tray MKS 60 FS

Item number: 6055141



Dimensions



| | |
|-----------------|----------|
| Dimension | 60 x 150 |
| Length | 3,000 mm |
| Length | 10 ft |
| Width | 150 mm |
| Width | 6 in |
| Height | 60 mm |
| Height | 2 in |
| Plate thickness | 0.04 in |
| Plate thickness | 1 mm |
| Dimension B | 150 mm |
| Maß W | 150 mm |

Technical data

| | |
|---|----------------------|
| Connector version | Supplied connectors |
| Mounting system fastening type | Floor Ceiling Wall |
| Walkable | no |
| Maintain electrical functions | no |
| With cover | no |
| Mounting perforation in base | yes |
| NATO hole pattern | no |
| Usable cross-section | 88 cm ² |
| Usable cross-section | 8800 mm ² |
| Rustproof steel, pickled | no |
| Side perforation | yes |
| Wide-span version | no |
| Load test type according to IEC 61537 | Type II |
| Type of connector, cable support system | Screwed |

Technical data sheet

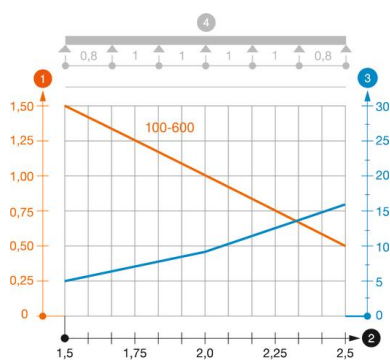
Cable tray MKS 60 FS

Item number: 6055141



Loads

| | |
|-----------------------------------|-----------|
| Insertable support spacings, min. | 1.5 m |
| Insertable support spacings, max. | 2.5 m |
| Support spacing 1.5 m | 1.5 kN/m |
| Support spacing 1.75 m | 1.25 kN/m |
| Support spacing 2.0 m | 1 kN/m |
| Support spacing 2.5 m | 0.5 kN/m |



Load diagram, cable tray, type MKS 60

- 1 Permitted cable tray/ladder load in kN/m without man load
- 2 Support width in m
- 3 Rail bend in mm at permitted kN/m
- 4 Load scheme during testing
- Load curve with cable tray/ladder width in mm
- Strut bend curve according to support width